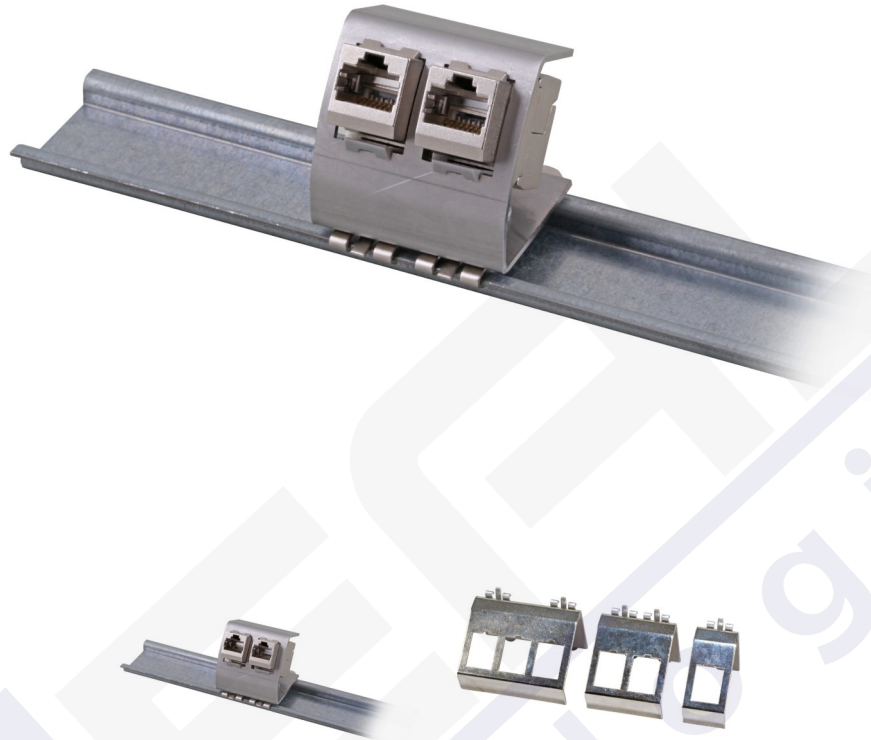


# Abierto Keystone 3 Huecos Para Carril Din Abierto



## General data

Keystone holder, stainless steel  
Intended for mounting on DIN-Rail  
Delivery without Keystone Modules

## Allgemeine Daten

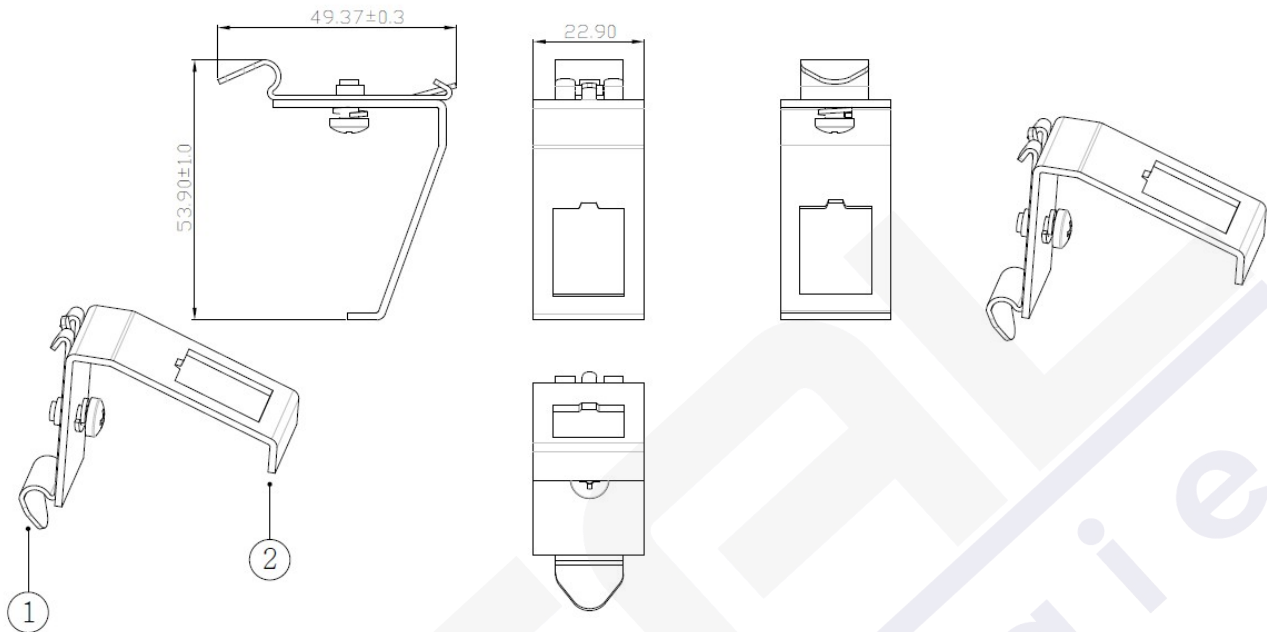
Material	Metal
With labeling field	False
With earthing spring	False
Type of DIN-rail adapter	Inclined
Type of fastening	DIN rail (top hat rail) 35 mm

## Available variants

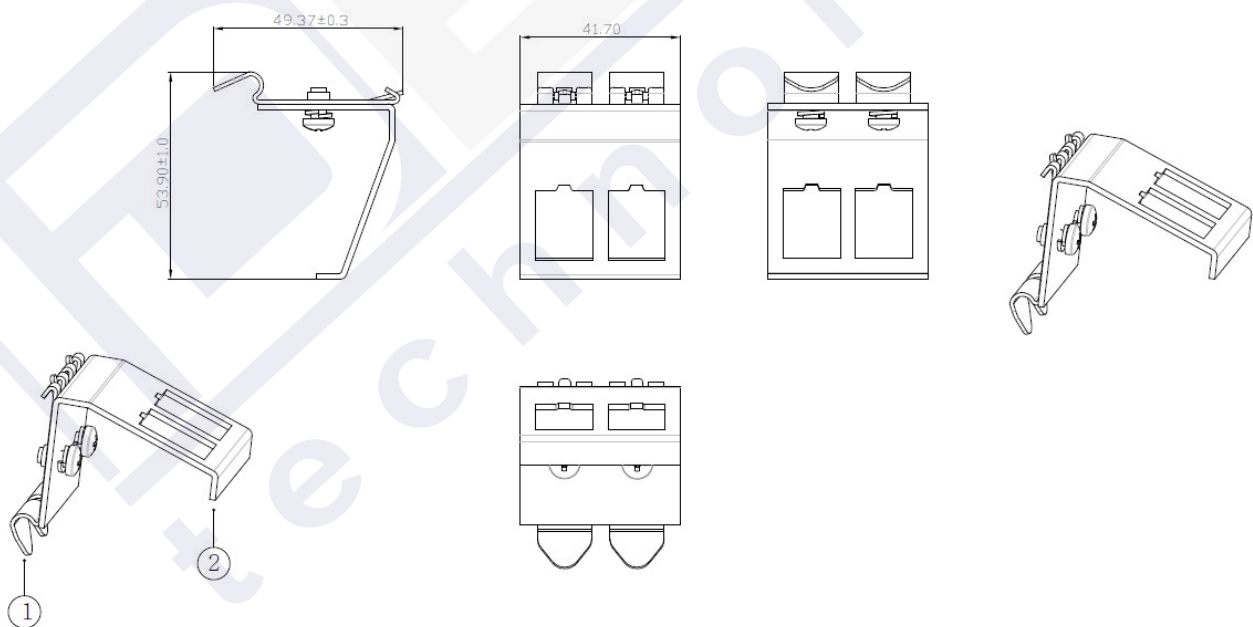
ArtNr.	Bezeichnung	max. assembly
AD25184-1	Keystone holder for DIN-Rail, Stainless Steel, for 1 x Keystone	1
AD25184-2	Keystone holder for DIN-Rail, Stainless Steel, for 2 x Keystone	2
AD25184-3	Keystone holder for DIN-Rail, Stainless Steel, for 3 x Keystone	3

# Abierto Keystone 3 Huecos Para Carril Din Abierto

## Drawings

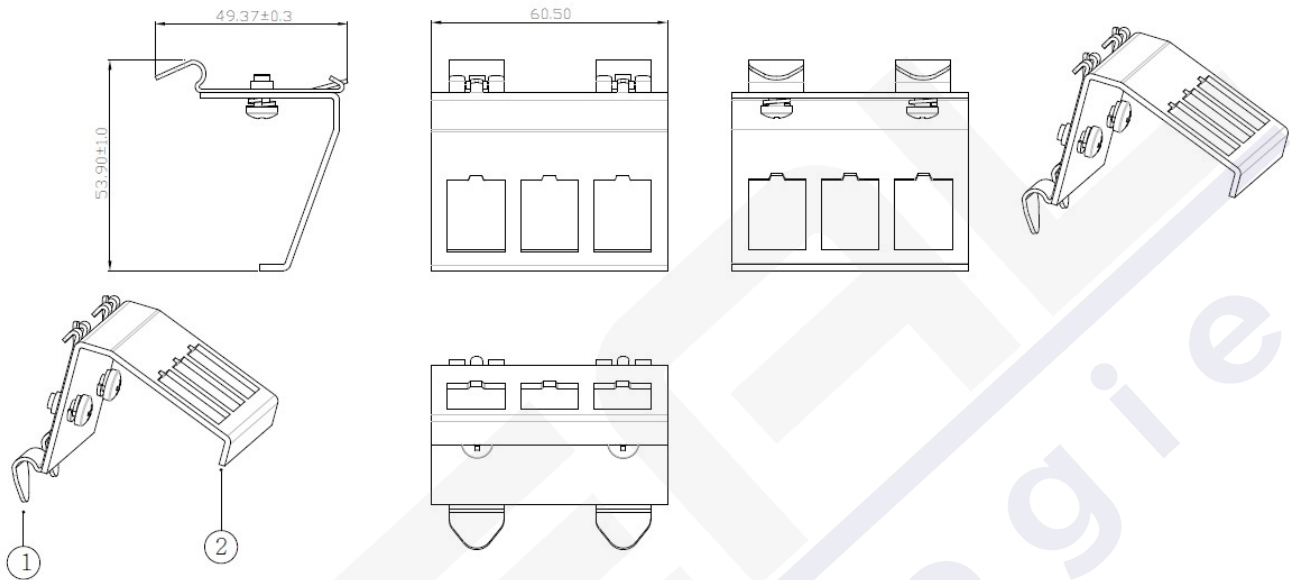


MECHANICAL  
(1)Material: SUS304  
(2)Material: SPCC



MECHANICAL  
(1)Material: SUS304  
(2)Material: SPCC  
(2)Material: SPCC

# Abierto Keystone 3 Huecos Para Carril Din Abierto



MECHANICAL  
(1)Material: SUS304  
(2)Material: SPCC