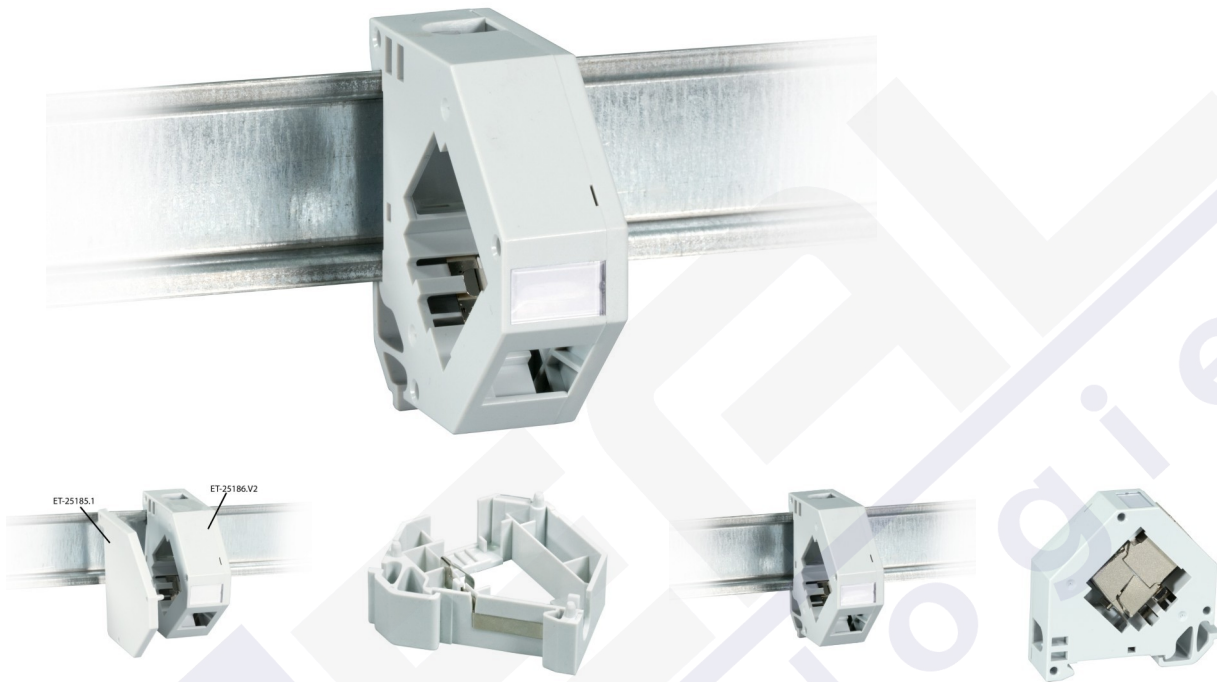


Abierto Keystone Para Carril Din Cerrado



General data

Module holder 1-Port, plastic

For mounting on DIN-Rail TH35 acc. to DIN EN60715

Width: 22mm

For Keystones

Side-by-side mountable, with earthing spring

Colour: RAL7035, light grey

Closed on one side

Delivery unloaded and without end plate left (ET-25185.1)

An end plate left is always necessary. Module holder requires an end plate left, several connected module holders also require only one end plate left.

Allgemeine Daten

Stackable	True
Suitable for	1 module (keystone format)
With earthing spring	True
With labeling field	True
Colour	light grey
Material	Plastic
Type of DIN-rail adapter	Inclined

Abierto Keystone Para Carril Din Cerrado

Type of fastening | DIN rail (top hat rail) 35 mm

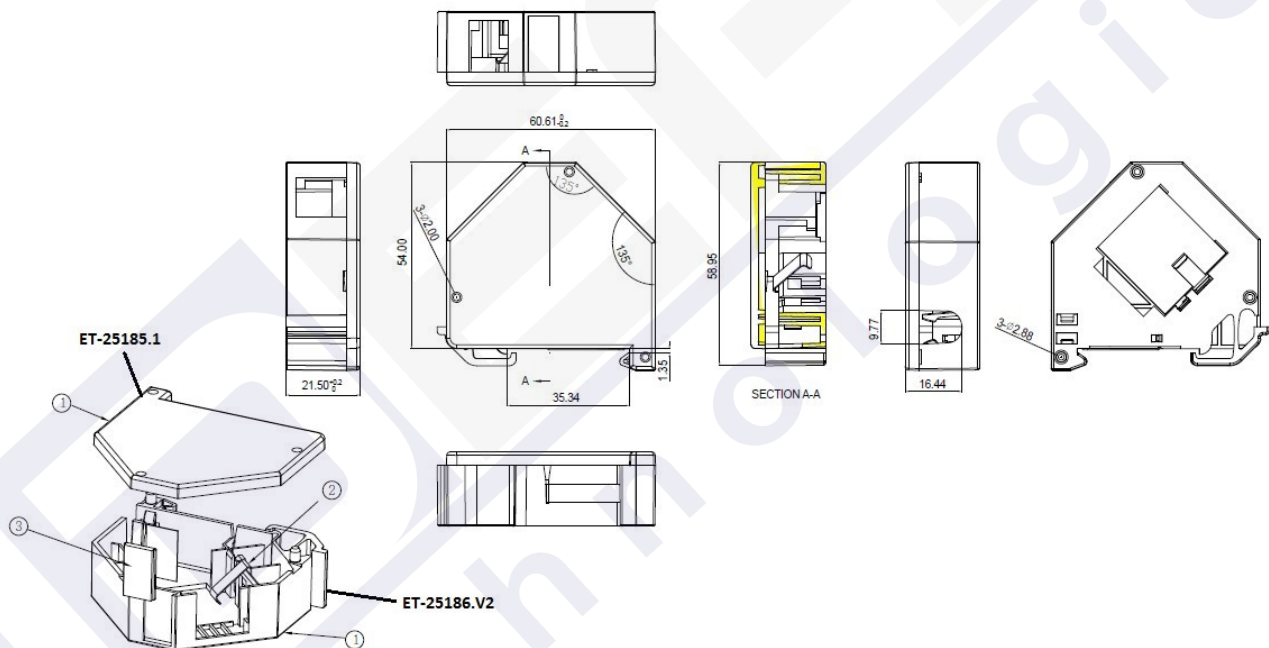
Abmessungen

Abmessungen (WxHxD) | 21.5 x 54.0 x 60.6 mm

Available variants

ArtNr.	Bezeichnung	Assembly	Number of ports	max. assembly
ET-25186.V2	Keystone holder 1-Port, for DIN Rail, plastic	Unloaded	1	1

Drawings



MECHANICAL

1-Plastic Materials: PC FR V2

2-Sheet Metal: Phosphor Bronze (electroplating Ni)

3-Slide:AS