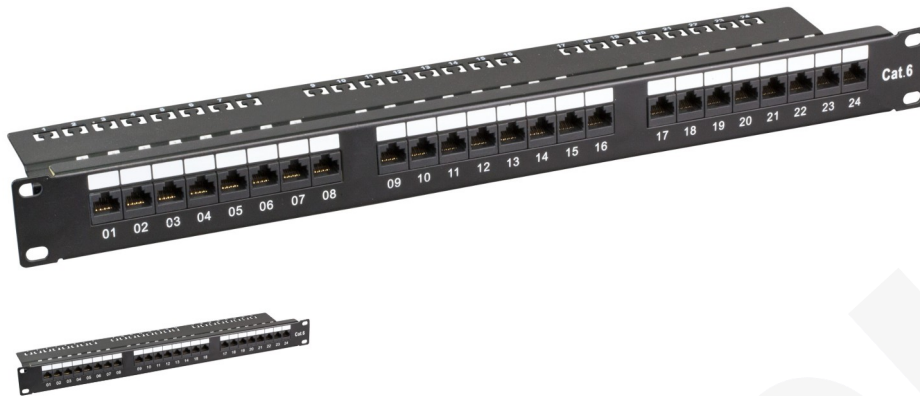


Panel Utp Ecolan 24 RJ45 Cat-6 C/ Bandeja



Class E



General data

The high quality of the unshielded Cat.6 RJ45 patch panel ensures excellent performance for 5 Gigabit Ethernet applications.

19" mounting, 1U

24 Ports

LSA connection strip for installation cable AWG26..AWG23

Colour code according to TIA / EIA 568 A / B

Scope of delivery:

24 cable ties, Instruction manual

Allgemeine Daten

Colour code	acc. TIA/EIA 568A/B
Type of connector	RJ45 8(4)
Mounting method	482.6 mm (19 inch) mounting
Number of height units	1 U
Connection type	LSA
Current Rating	1.5 A
Suitable for number of connectors	24
Cross section	AWG 26 - AWG 23
Complaint to UL94	V-0
Category	6

Mechanische Eigenschaften

Material LSA contacts	Phosphor bronze, tinned
Housing material LSA-terminal	PC
Insertion force	30 N

Ideal Technology has a policy of continuous improvement. Specifications are subject to change without notice.

Panel Utp Ecolan 24 RJ45 Cat-6 C/ Bandeja

Housing material of RJ45 jacks	PBT
Durability LSA contacts	200
Contact coating	50 μ " gold plated
Housing material Panel	SECC Steel, 1.2mm
Mating cycles RJ45 jack	750

Abmessungen

Width	482.6 mm
Depth	112.0 mm
Height	44.2 mm

Umgebungsbedingungen

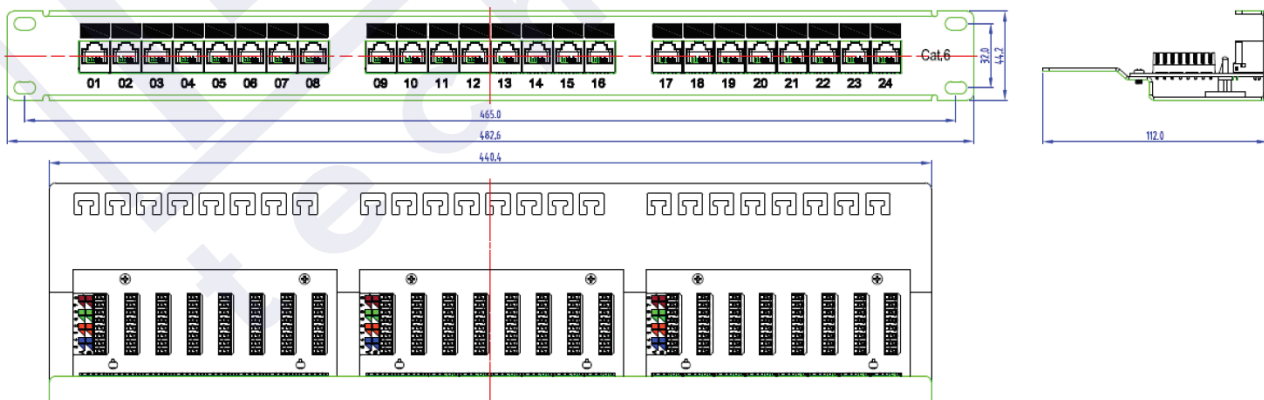
Temperature Range (Storage)	-40 - 68 °C
Temperature Range (Operation)	-10 - 60 °C

Elektrische Eigenschaften

POE Standard	POE
Dielectric Withstanding Voltage	1000 V AC 60Hz
screened	False
Insulation Resistance	500 M Ω
Contact Resistance	10 m Ω
Electrical strength	125 V AC RMS

Übertragungstechnische Eigenschaften

Bandwidth	250 MHz
Transmission	5 Gbit



Ideal Technology has a policy of continuous improvement. Specifications are subject to change without notice.