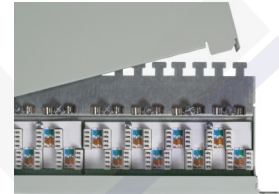
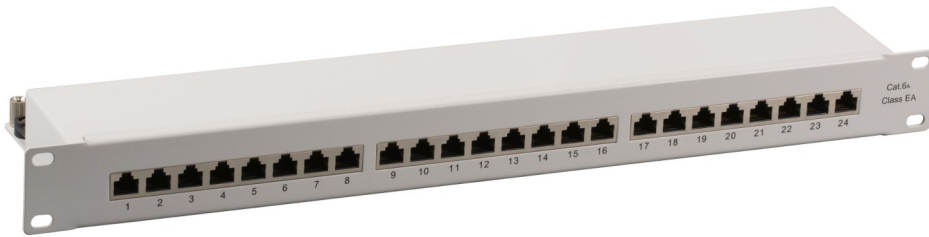


# Panel Ftp Ecolan 24 RJ45 Cat-6a Negro



## General data

The high quality of the shielded Cat.6A RJ45 patch panel ensures excellent performance for 10 Gigabit Ethernet applications.

19" mounting, 1U

24 Ports

LSA connection strip for installation cable AWG24..AWG22

Color code according to TIA / EIA 568 A / B

Lid with quick release

With earthing terminal

## Scope of delivery:

24 cable ties, Instruction manual, 4 screw M6x18mm with nuts

## Allgemeine Daten

Type of connector	RJ45 8(8)
Colour code	acc. TIA/EIA 568A/B
Mounting method	482.6 mm (19 inch) mounting
Number of height units	1 U
Connection type	LSA
Cross section	AWG 24 - AWG 22
Current Rating	1.5 A
Suitable for number of connectors	24
Complaint to UL94	V-0
Category	6A (TIA)

# Panel Ftp Ecolan 24 RJ45 Cat-6a Negro

Mechanische Eigenschaften	
Contact coating	3 $\mu$ " gold plated
Housing material Panel	Steel, 1.5mm
Material LSA contacts	Phosphor bronze, tinned
Housing material LSA-terminal	PC
Insertion force	30 N
Housing material of RJ45 jacks	PBT
Durability LSA contacts	200
Mating cycles RJ45 jack	750

Abmessungen	
Width	482.6 mm
Height	44.5 mm
Depth	108.2 mm

Umgebungsbedingungen	
Temperature Range (Operation)	0 - 70 °C
Temperature Range (Storage)	-40 - 85 °C

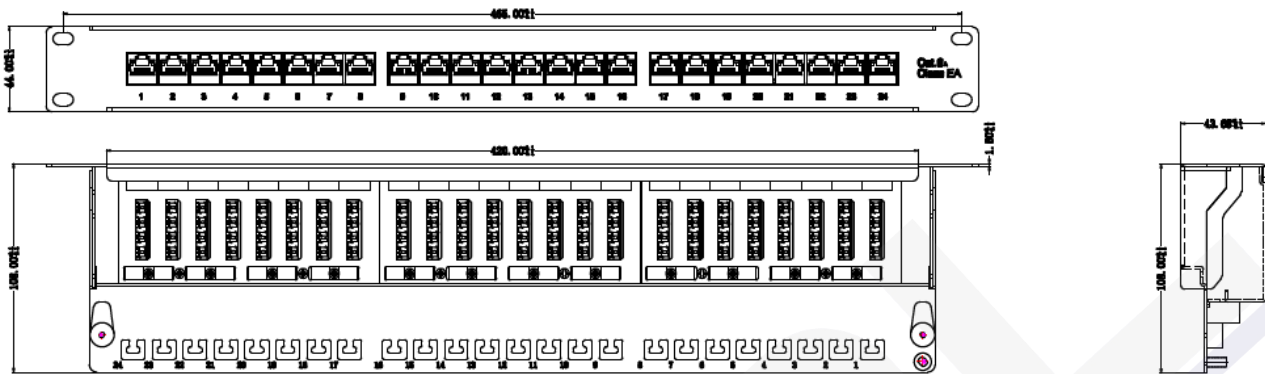
Elektrische Eigenschaften	
POE Standard	POE
Contact Resistance	100 m $\Omega$
Insulation Resistance	1000 M $\Omega$
Dielectric Withstanding Voltage	750 V AC 60Hz
screened	True
Electrical strength	125 V AC RMS

Übertragungstechnische Eigenschaften	
Bandwidth	500 MHz
Transmission	10 Gbit

Ideal Technology has a policy of continuous improvement. Specifications are subject to change without notice.

# Panel Ftp Ecolan 24 RJ45 Cat-6a Negro

## Drawings



Ideal Technology has a policy of continuous improvement. Specifications are subject to change without notice.