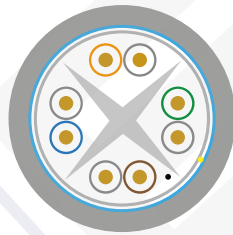
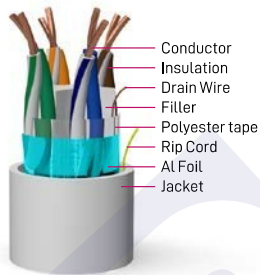
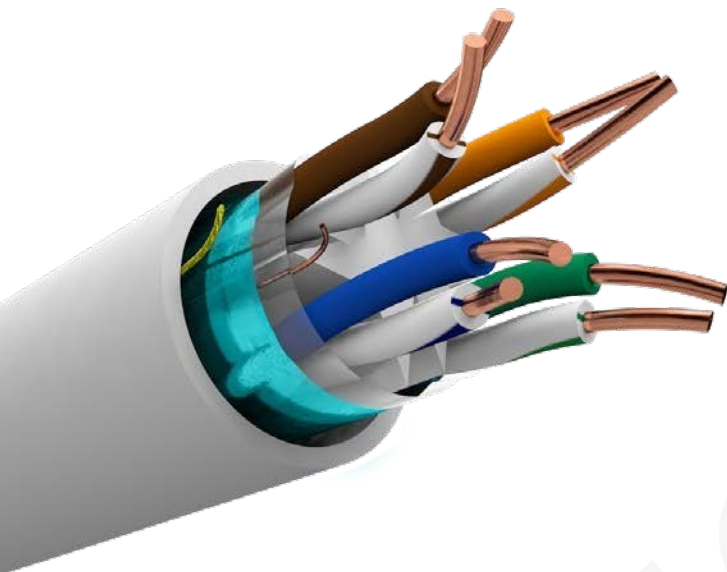


# Cable Ftp Ideal Cat-6a Lszh-dca



## PRODUCT DESCRIPTION

### • Standard Reference:

ISO/IEC 11801:2011  
IEC 61156-5:2012  
EN 13501-6  
EN 50173-1:2011  
EN 50173-2:2007 including amendment A1:2010  
EN 50288-9-1:2012  
EN 50288-4  
EN 50575:2014+A1:2016  
EN 60332-1[1,2],60332-3C, 60754-[1,2], 61034-[1,2]  
ANSI/TIA-568-6-2:2009

### • Rated temperature: 90°C

### • Installation temperature: -30°C~+50°C

### • Rohs/REACH complied

### • DoP N°: 2658-CPR-5015\_FAM093\_04

### • Application:

VoIP, ISDN  
Token, 100M TP-PDM  
Analog and Data Video  
TR-16 Active and Passive  
115M/662m/1.2GATM  
IEEE802.3: 100Base-T, 10GBase-T, 10GBase-T

### CRP Class:



## TECHNICAL PERFORMANCE (100m)

Frequency (MHz)	RL(dB) min.	Attenuation (dB/100m) max.	NEXT (dB/100m)	ACR (dB)
4.0	23.0	3.7	65.27	40.00
8.0	24.5	5.2	60.75	40.00
10.0	26.8	5.9	59.30	40.00
16.0	25.0	7.4	56.24	37.96
20.0	25.0	8.3	54.78	36.99
31.5	23.6	10.5	51.88	35.05
62.5	21.5	14.9	47.36	32.04
100	20.1	19.0	44.30	30.00
200	18.0	27.5	38.30	/
300	16.8	34.2	37.10	/
500	15.2	45.3	33.80	/
Frequency (MHz)	ELFEXT (dB/100m)	PSNEXT (dB/100m)	PSELFEXT (dB/100m)	Impedance (Ohms)
4	55.76	63.27	52.76	100±15
8	49.74	58.75	46.74	
10	47.80	57.30	44.80	
16	43.72	54.24	40.72	
20	41.78	52.78	38.78	
31.5	37.90	49.88	34.90	
62.5	31.88	45.36	28.88	
100	27.80	42.30	24.80	
200	21.80	37.80	18.80	
300	18.30	35.1	15.30	
500	13.80	31.8	10.80	

## CABLE CONSTRUCTION

<b>Conductor</b>	Material	SOLID Bare Copper
	Nom.O.D (mm)	0.53 ± 0.008mm. 23 & 24AWG
<b>Insulation</b>	Material	HPDE
<b>Insulation Diam. ø</b>		1.07 ± 0.02mm
<b>Thickness</b>		AVG: 0.27mm, MIN: 0.26mm
<b>Each Pair is Twisted</b>	Polyester	Yes
	Filler	Yes
	Drain Wire	0.4 TC
	AL Foil	Thick: 0.050mm, Extent: 23mm
	Rip Cord	Yes
<b>Surface Printing</b>	Thickness	AVG: 0.65 ± 0.05mm
	Outer Diam.ø	7.2 ± 0.30mm
	Jacket Color (standard)	White: RAL 9016 ○
<b>Code Color</b>	1 White/Blue	2 White/Orange
	3 White/Green	4 White/Brown
<b>Dimension - Weight</b>	37x37x26cm - 58Kg/Km	
<b>Packing</b>	1 Wooden Drum	
<b>Packing Length</b>	305 ± 1.0m	

## CHARACTERISTICS

<b>Max. Conductor DC Resistance at 20°C (Ω/Km)</b>	< 93.8
<b>Rated Temperature (°C)</b>	75
<b>Rated Voltage (V)</b>	300V
<b>Velocity Ratio</b>	65%

Ideal Technology has a policy of continuous improvement. Specifications are subject to change without notice.